



Crowmarsh Gifford C of E Primary School & Pre School

"Let Your Light Shine..." Matthew 5:16

• Kindness • Resilience • Integrity • Courage • Curiosity

Family Newsletter – May 2023

Garden Tidy

Thank you to all who got involved in the Garden Tidy this week. We are organising another one for Thursday 8th June 3pm – 4.30pm. Please come ready to paint or garden, with your own equipment, refreshments will be provided. If you cannot make it perhaps you can donate some plants or seeds?

Big Sing

Thank you to Mrs Corrigan & Mrs Bowden for taking a group of children to the Big Sing in Oxford. What an amazing experience. The children did us proud.



Football

Congratulations to all who participated in the Benson football tournament this week. We did well to achieve second place, the children were a credit to our school. Huge thanks those parents & staff who helped to organise the event.

Welcome

Welcome to Mrs Donna Evans who will start with us as the School Business Manager In June, after half term. Mrs Rance will remain as Finance Officer until the end of the summer term when she will retire. Please do say hi to Mrs Evans who will be a new face in the refurbished office!

Vacancies

Please take a look at our website to view our current vacancies.

<https://www.crowmarshgiffordprimary.com/page/?title=Vacancies+%2D+Join+our+community&pid=25>



Crowmarsh Gifford C of E Primary School & Pre School

"Let Your Light Shine..." Matthew 5:16

• Kindness • Resilience • Integrity • Courage • Curiosity

Road Safety

Unfortunately, we have received a number of complaints from parents and residents about a small number of people causing danger and inconvenience on Old Reading Road at drop off and pick up. The children and keeping them safe should be everyone's priority, even if you are running late, please park safely & considerately, do not block the road, keep to the speed limit, and please address any concerns with courtesy. It is important that at all times we act as role models for the children.

Upcoming Events

Thursday 8th June – 2nd Garden Tidy

Thursday 8th June – Year 2 Trip

Friday 16th June 2023 School closed Inset

Thursday 29th July Sports Day

Tuesday 4th July- 9:30-10:30. Stay & Play for September 23 Reception Class

Thursday 6th July- 10:30-11:30 Stay & Play for September 23 Reception Class

WB 3rd July – Year 5 Active Leaders Course

7th & 7th July – Year 3 & 4 Residential

Tuesday 11th July – Year 3 Strings Concert (Year 3 Parents + strings music students)

12th – 14th July – Year 5 Residential

Thursday 13th July- 1:45-2:45 Stay & Play for September 23 Reception Class independently.

Thursday 13th July – Year 6 Parent led event after school TBC.

Monday 17th July – Rock Steady Concert (for Rock Steady Parents)

Friday 21st July 2023 School closes for summer



Crowmarsh Gifford C of E Primary School & Pre School

"Let Your Light Shine..." Matthew 5:16

• Kindness • Resilience • Integrity • Courage • Curiosity

Term Dates 2023-2024

4 September - 20 October 2023	Autumn Term
1st & 4th September 2023	Inset, school closed to children
20th October 2023	Inset, school closed to children
23 October - 27 October 2023	October half-term
30 October - 20 December 2023	Autumn Term
21 December - 5 January 2024	Christmas holiday
8 January - 9 February 2024	Spring Term
12 February - 16 February 2024	Spring half-term
19 February - 28 March 2024	Spring Term
29 March - 12 April 2024	Easter Holiday
15 April - 24 May 2024	Summer Term
15th April 2024	Inset, school closed to children
27 May - 31 May 2024	Late Spring half-term
3 June - 24 July 2024	Summer Term
3rd June 2024	Inset, school closed to children



Crowmarsh Gifford C of E Primary School & Pre School

"Let Your Light Shine..." Matthew 5:16

• Kindness • Resilience • Integrity • Courage • Curiosity

Community News

BARBERS of BENSON
SUPPORT C.E. CROWMARSH PRIMARY

South Oxfordshire's Premier Barbershop
Pledge to donate £1 for every child's haircut to the PTA

APPLE ANDROID

33B High Street, Benson OX10 6RP ~ 01491 917294

At **Barbers of Benson** we believe in supporting our local community. That's why this year, for every haircut we give to a pupil at Crowmarsh School we will donate £1 to the PTA. Just mention your school when you come in for your next haircut. Don't forget, we cut girls hair too!

Read our reviews on Google: Barbers of Benson
Book via our website: www.barbersofbenson.com
Call us on 01491917294

S.J.Richardson Photography

Thank you to Sophie Richardson who kindly came in at short notice this week to take photos for our new website which will launch after Easter. Look out for the website and the photos!

<https://www.sjrichardsonphotography.com/families>

<https://www.instagram.com/sjrichardsonphotography/>

A free tree trail pack with map can be picked up from the Manor Café from Tuesday 30 May to Friday 2 June between 9am and 4pm. The café can be found in the Manor House building on our Howbery Park site (Benson Lane, Crowmarsh, OX10 8BA).

The trail goes round eleven of our notable trees and there's a short description of each tree on the map. The pack includes crayons and paper to do some tree rubbings. There are mini hole punchers by each of the trees so you can stamp the map to see if you've found all eleven trees, and when you return to the café at the end of the trail you can collect a small reward.

Our grounds are open until 6pm and are only a short walk via a footpath from Crowmarsh Recreation Ground. There is a bus stop outside the site and ample free parking. Young children need to be accompanied on the trail, as there are some roads and slow moving vehicles in Howbery's grounds.

For a virtual tour and insight into just a few of the many trees on the park please see <https://howberypark.com/about-us/nature-environment/>.

SCAN FOR MORE INFO

FUN SPONSORED CIRCULAR RIVERSIDE WALK
FERRY CROSSING AT LITTLE STOKE / CHOLSEY MARSH

VISITING & SUPPORTING HISTORIC CHURCHES AT WALLINGFORD, MONGEWELL & NEWNHAM MURREN

Saturday 10th June 2023

Starting at St. Mary's, Newnham Murren OX10 8BW
10am to 4pm - Free parking

Returning to Newnham Farm House for tea and cake!
9 Miles or 4 Miles with shuttle boat booking

To register interest, book a start time or book a shuttle boat please email: circular.walk.wallingford@gmail.com

Enquiries: 01491 833111 / 07399 767480

FLOAT ABILITY
Relax • Explore • Make Friends • Heal

Churches Conservation Trust



Crowmarsh Gifford C of E Primary School & Pre School

"Let Your Light Shine..." Matthew 5:16

• Kindness • Resilience • Integrity • Courage • Curiosity

Oxfordshire Libraries

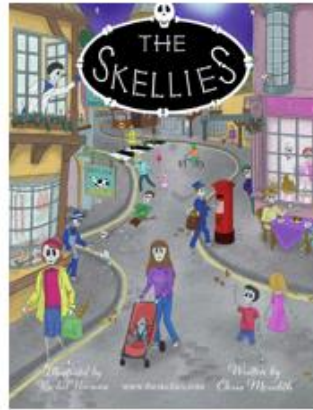
Wallingford Library

Wallingford Library invite you to come and meet local author, Chris Meredith.

On Thursday, 1st June at 10am Chris will be reading from his book, *The Skellies*. The story, aimed at children aged 7 and upwards, follows the adventures of the churchyard children, Luke, Emily, Frankie, and a cat called Nine-Lives. Some readers have described the story as a cross between Enid Blyton and *Scooby Doo*.

This is a free event and there will be skeleton crafts and puzzles in the library throughout half term.

Wallingford Library is on Facebook. Visit our page to find out what else is happening in the library.





Crowmarsh Gifford C of E Primary School & Pre School

"Let Your Light Shine..." Matthew 5:16

• Kindness • Resilience • Integrity • Courage • Curiosity

BEE DAY

On Saturday May 20th

Sustainable Wallingford's Incredible Edible project will be celebrating

Bee Day

from 10-12.30

outside Wallingford Library

**Plant food and insect friendly plants in a nectar bar,
make bug houses and find out all about bees.**

**Drop-in craft activity for children
Come and make a bee for our honeycomb**

All welcome!



Crowmarsh Gifford C of E Primary School & Pre School

"Let Your Light Shine..." Matthew 5:16

• Kindness • Resilience • Integrity • Courage • Curiosity



OX10 Community Centre Invites you to:

- A Pop-up Community Art Gallery
- Community Art Project & Workshop
- Camerados Public Living Room

at: Wallingford Carnival

on: Saturday 17th June 2023

when: 10am - 4pm

where: Kine Croft, Wallingford

<https://greatbiggreenweek.com/events/pop-up-art-gallery-and-workshop>



THE GREAT
BIG GREEN
WEEK





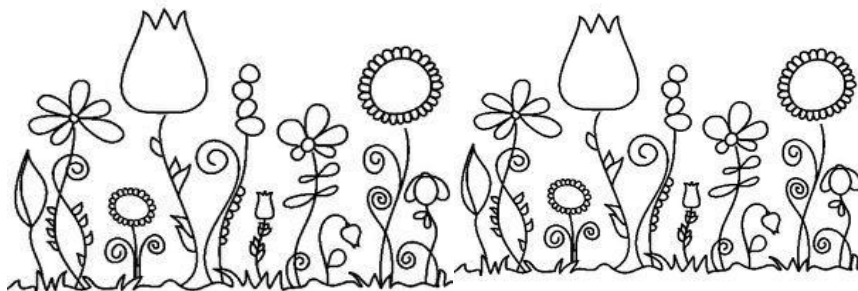
Crowmarsh Gifford C of E Primary School & Pre School

"Let Your Light Shine..." Matthew 5:16

• Kindness • Resilience • Integrity • Courage • Curiosity

School Garden Tidy

Please
by
help



drop
and

Thursday 8th June 3.00 – 4.30pm

Drinks and refreshments will be provided

**Please bring your own tools, and any donations are welcome!*

If you can't make it on this day, speak to the school office, and drop by anytime to help out!

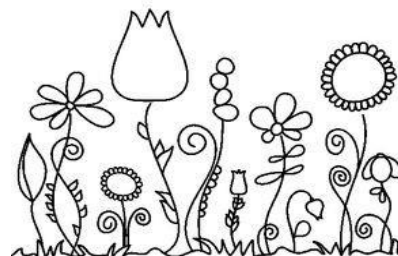
How can I help?

- Digging beds
- Painting the shed – please come dressed to paint!
- Sorting tools
- Clearing rubbish (and taking to the tip)
- Planting up pots
- Revamping the bug hotel
- Fix the bench
- Bring some good ideas for gardening activities
- Install an outside tap!

Donation requests

- Seeds, Seedlings, and plants
- Large pots
- Compost and topsoil
- Paint brushes
- Hanging baskets or window boxes
- Garden bench
- Large watering can

**The school often needs help with tasks and welcomes kind donations, look on our school website 'Support Our School' to see other ways that you can help the school community...*





Crowmarsh Gifford C of E Primary School & Pre School

"Let Your Light Shine..." Matthew 5:16

• Kindness • Resilience • Integrity • Courage • Curiosity

Pavilion project grand opening event

Band music and refreshments
Exhibition of historic village photographs



Come and see the new facilities:

- * Accessible toilets *
- * New meeting room *
- * Food and drink servery *
- * Outdoor table tennis table *
- * Paved landscaped outdoor dining terrace *

Saturday 17th June
from 10.30

