

Welcome to Crowmarsh Gifford

Early Years Foundation Stage EYFS

Please take a seat

Crowmarsh Gifford C of E Primary School & Pre-School

"is a GOOD school" - OFSTED June 2024



Welcome to EYFS

A bit about your EYFS team:

Between the Pre-School and Reception class we have over 70 years of EYFS experience.



Crowmarsh Gifford C of E Primary School & Pre-School

Care, Grow, Persevere, Shine



Welcome to EYFS

More about Crowmarsh Gifford School

Leadership Team:

Mrs V. Eaglen- Headteacher

Mrs. K. Lucas- Deputy Head Teacher & SENDCo

Governors:

Mrs Caroline Ibbotson- Chair Of Governors

Mrs Clare Ahern- Vice Chair of Governors

PTA:

Mrs Clare Walker & Mrs Alice Fletcher-Single- Co-Chairs of PTA

Designated Safeguarding Team:

Mrs V. Eaglen- Headteacher

Mrs K. Lucas- Deputy Head Teacher & SENDCo

Miss C. Moore- EYFS Leader.

School Office:

Mrs D. Evans- School Business Manager

Mrs W. Hallam- School Administrator

Mrs L. Treacy- School Administrator

Crowmarsh Gifford C of E Primary School & Pre-School

Care, Grow, Persevere, Shine



Welcome to EYFS

More about Crowmarsh Gifford School

Our School Vision- a golden thread through everything we do

*Care, Grow, Persevere,
Shine*



Crowmarsh Gifford C of E Primary School & Pre-School

Care, Grow, Persevere, Shine



Our School Uniform

Shine

We are very proud of our school. Our uniform expectations reflect this and they encourage children to take pride in themselves, their school and the work they produce.

Required

- Grey trousers, shorts, skirt or pinafore dress
- Green and white checked dress -summer only
 - White shirt or polo shirt
- Green sweatshirt, cardigan or jumper – with or without the school logo
- Grey or white socks, white, grey or green tights

Hair

- Hair styles should be appropriate for school
- Shoulder length hair must be tied back. **Hair accessories with flowers, large bows etc are not part of school**

uniform

Jewellery: for safety reasons jewellery must not be worn. However, if your child has pierced ears, small plain stud earrings may be worn.

PE KIT

Required –

- Plain, dark coloured shorts, leggings or jogging bottoms
- Green T-shirt with or without the school logo, (we are phasing out coloured tshirts)
- Plimsolls/ Trainers

Optional –

- School PE hoodie

There is no obligation to purchase school logo uniform. Many high street shops & supermarkets sell suitable clothing.

School merchandise can be purchased from **‘Make it Mine’**
Please see our school website for how to contact.

Second Hand uniform: can be purchased from the PTA website – see school website to access

We encourage Pre-School children to wear a uniform to begin building a sense of belonging



Crowmarsh Gifford C of E Primary School & Pre-School

Care, Grow, Persevere, Shine



Daily Equipment

Care & Grow

Looking after personal equipment encourages children to become responsible for their possessions and take care of and prepare the things they need each day for school.

- Refillable water bottle- brought in daily
Please ensure only water is brought in for the day, squash or juice is fine for lunch times. No fizzy drinks.
- Wellies- to stay in school
- A full Change of clothes including underwear- to stay in school (just in case)
- Book bag (Reception Only)
- Reading book and reading record (provided at the start of the year to Reception only)



**Please ensure everything is clearly named.
*Even underwear and socks!***

Crowmarsh Gifford C of E Primary School & Pre-School

Care, Grow, Persevere, Shine



Lunches

Children in Reception to Year 2 are entitled to an Infant Free school meal each day.

Menus change termly and are a three-week rolling menu.

You will need to order lunches on Arbor ahead of time.

This is so the kitchen can order the correct amount of food to minimise wastage and ensure costs are kept low.

Pre-School children who join us for lunch are welcome to have a hot school dinner. Parents will be charged via their online account. Otherwise, they will need a packed lunch.

All Pre-School and Reception children are welcome to bring a packed lunch if they would prefer.

Please ensure the office are aware of any dietary requirements **PRIOR** to your child starting with us.

For the first 3 days of term (Wed-Fri) Reception children will need a packed lunch.

Crowmarsh Gifford C of E Primary School & Pre-School

Care, Grow, Persevere, Shine



Snacks

Grow

All children in EYFS up to the end of year 2 receive a piece of fruit as a snack each day.

Children under the age of 5 are entitled to a free carton of milk each day.

To prevent waste, we ask that, if you would like your child to receive milk each day, please sign up using the information below.

Once your child turns 5, you will be able to pay for the milk each day.

If your child is entitled to Free School Meals and you would like them to have milk each day, please speak to Miss Moore.



<https://www.coolmilk.com/parents/>

Cool Milk

Crowmarsh Gifford C of E Primary School & Pre-School

Care, Grow, Persevere, Shine



Additional Support- Pre School

Care

Early years pupil premium- Children age 3-4 (Pre-School)

Your child's early years education provider could get up to £353 per year to help with your child's education. This will be paid direct to your provider.

Who can apply

You can apply for early years pupil premium if your child is aged 3 or 4 and you get [15 hours free childcare](#).

You must also get at least one of the following:

- [Income Support](#)
 - income-based [Jobseeker's Allowance](#)
 - income-related [Employment and Support Allowance](#)
 - support under [part six of the Immigration and Asylum Act 1999](#)
 - the guaranteed element of [State Pension Credit](#)
 - [Child Tax Credit](#) (provided you are not also entitled to [Working Tax Credit](#)) and have an annual gross income of no more than £16,190
 - [Working Tax Credit](#) run-on, which is paid for 4 weeks after you stop qualifying for Working Tax Credit
 - Universal Credit - your household income must be less than £7,400 a year after tax not including any benefits you get
- You may also get early years pupil premium if your child is currently being looked after by a local authority in England or Wales or if your child has left care in England or Wales through:
- Adoption, special guardianship order, a child arrangements order

Disability access fund- For those accessing DLA for their child in Pre-School

Your child's early years provider could get £828 or more per year to help with their education and support.

This will be paid direct to your early years provider.

You can apply to get disability access funding if your child is aged 3 or 4 and you're receiving both:

- [15 hours free childcare](#) - you do not need to use all of your hours to be eligible
- [Disability living allowance for children](#)

Some families of Pre-School children may also be eligible for Free School Meals

Crowmarsh Gifford C of E Primary School & Pre-School

Care, Grow, Persevere, Shine



Additional Support- Reception Onwards *Care*

Free School Meals

Your child may be able to get free school meals if you get any of the following:

- Income Support
- income-based Jobseeker's Allowance
- income-related Employment and Support Allowance
- support under Part VI of the Immigration and Asylum Act 1999
- the guaranteed element of Pension Credit
- Child Tax Credit (provided you're not also entitled to Working Tax Credit and have an annual gross income of no more than £16,190)
- Working Tax Credit run-on - paid for 4 weeks after you stop qualifying for Working Tax Credit
- Universal Credit - if you apply on or after 1 April 2018 your household income must be less than £7,400 a year (after tax and not including any benefits you get)

Children who get paid these benefits directly, instead of through a parent or guardian, can also get free school meals.

Your child may also get free school meals if you get any of these benefits and your child is both:

- younger than the [compulsory age for starting school](#)
- in full-time education

If you do not qualify for most benefits (also known as having 'no recourse to public funds'), your child may still be eligible for free school meals. Ask their school or local authority whether they're eligible.



All children in Reception to Year 2 receive Infant free school meals (formally Universal Free School Meals). If you are in receipt of any of the above, we will still need to know as we can access additional funding to support your child in school.

Crowmarsh Gifford C of E Primary School & Pre-School

Care, Grow, Persevere, Shine



Additional Support- Reception Onwards *Care*

Service Pupil Premium

What is the Service Pupil Premium?

The purpose of the Service pupil premium The Department for Education (DfE) introduced the Service pupil premium (SPP) in April 2011 in recognition of the specific challenges children from service families face and as part of the commitment to delivering the armed forces covenant. State schools, academies and free schools in England, which have children of service families in school years reception to year 11, can receive the SPP funding. It is designed to assist the school in providing the additional support that these children may need and is currently worth £335 per service child who meets the eligibility criteria.

Eligibility criteria

Pupils attract SPP if they meet one of the following criteria:

- one of their parents is serving in the regular armed forces (including pupils with a parent who is on full commitment as part of the full time reserve service)
- they have been registered as a 'service child' on a school census since 2016, see note on the DfE's ever 6 service child measure
- one of their parents died whilst serving in the armed forces and the pupil receives a pension under the Armed Forces Compensation Scheme or the War Pensions Scheme Children have to be flagged as service children ahead of the autumn school census deadline.

Service parents need to make the school aware of their status by talking to the head teacher or school admin staff.



Crowmarsh Gifford
Church of England Primary School

Service Families- Deployment information sharing

Are you or a close member of family a member of the Armed Forces and being deployed?
If so, it is vital we know so we can ensure children are best supported in school.

Please scan the QR code below and complete the form to share information regarding deployment.

Service Families- Deployment information



Ofsted

Crowmarsh Gifford C of E Primary School & Pre-School

Care, Grow, Persevere, Shine



Our Curriculum

*Grow, Persevere
& Shine*

We follow the Early Years Foundation Stage Framework. This is a statutory guidance.

It covers:

3 prime areas:

- Communication and Language
- Personal Social and Emotional Development
 - Physical Development

and **four specific areas:**

- Literacy
- Mathematics
- Understanding the World
- Expressive Art and Design.

- The prime areas create a foundation for the specific areas. For example, without gross motor skills (PD) children will not develop fine motor skills (PD) which will prevent them from mark making and, later, writing (Lit). It will also inhibit their creativity and things such as using scissors or paintbrushes (EAD)

Crowmarsh Gifford C of E Primary School & Pre-School

Care, Grow, Persevere, Shine



Our Curriculum

*Grow, Persevere
& Shine*

At the start of the year, within the first 6 weeks, each Reception child will complete the Reception Baseline Assessment (RBA). This is a statutory assessment that all Reception children complete.

Throughout the year, we use Development Matters as a supportive guide to ensure stepping stones are appropriate.

Where necessary, for example in the cases of a child needing additional support for SEND, we may use Birth to Five Matters as this breaks down developmental milestones into much smaller chunks.

Development Matter and Birth to Five Matters are both non-statutory documents that lay out 'expected' development of children.

At the end of their Reception year, children will be assessed against the Early Learning Goals. The ELGs are set at the development of a typical five-year-old.

Children are given emerging or expected against each of the 17 areas within the prime and specific areas.

Remember: Not all children will be five when the assessment is completed and every child, and their circumstances are unique.

Crowmarsh Gifford C of E Primary School & Pre-School

Care, Grow, Persevere, Shine



Our Curriculum

Grow, Persevere
& Shine

Our Curriculum Goals show the **skills** we want each child to leave our EYFS department with.

Each child is unique and will learn at their own rate, in their own way but having this makes sure we are striving to ensure each child has a strong foundation for the future no matter their journey or factors which may challenge us!

Early Years Curriculum Goals

A community supporting children to Care, Grow, Persevere & Shine

Communication and Language
Children will be able to ask questions to challenge themselves and others. They will accurately and confidently express their thoughts, ideas and opinions and hold conversations with adults and peers; listening and responding appropriately.

Personal, Social and Emotional Development:
Each child will show empathy to those around them. They will show determination and resilience to reach a goal and overcome whatever challenges they face and show curiosity about the world and others around them.

Physical Development:
Children will show strong fine and gross motor skills, moving with precision and accuracy for both moving around and for writing. Children will therefore be able to hold a pencil, and use small equipment, effectively and with care.

Literacy:
Children will read a range of appropriate texts, showing understanding and retelling them in their own words. They will write simple sentences that can be read by themselves and others.

Mathematics
Children will have a secure understanding of numbers to 20 and the number system. They will show understanding of number bonds to 10 and will be able to compare quantities in different contexts. They will also identify shape and use shape within their wider learning.

Understanding the World:
All children will value and appreciate different religions and cultural communities around them and the world and will talk about their own family and community. Children will actively look after their own environment and understand the effects of not doing so. Children will also be able to read a simple map.

Expressive Art and Design:
Children will design, develop and create props for role play and use these to help create stories, or songs and perform in front of an audience.

Crowmarsh Gifford C of E Primary School & Pre-School

Care, Grow, Persevere, Shine



Our Curriculum

*Grow, Persevere
& Shine*

To ensure children not only gain the **skills** they need to effectively progress through school, we have a bespoke Crowmarsh EYFS curriculum to ensure children gain the **knowledge** they need to be successful learners in the future.

At the start of the new term, you will receive a Curriculum Overview of the learning that will take place each half term. In some areas, this will be **knowledge** based. In others, it will be **skills** based.

Autumn		Spring		Summer	
All about Me	Let's Celebrate	Reach for the Stars	Down at the Bottom of the Garden	We're all going on a Summer Holiday	Growing and Changing
PSED (PSHE)	UW (RE/History)	UW (Science)	UW (Science)	UW (Geography)	PSED (PSHE/History)

Sneak Peek!

Crowmarsh Gifford C of E Primary School & Pre-School

Care, Grow, Persevere, Shine



Our Curriculum

*Grow, Persevere
& Shine*

With our curriculum now fully developed and embedded, we are turning our focus to enriching the children's learning through carefully planned trips and visits.



Pre-School
TBC- off site
visit



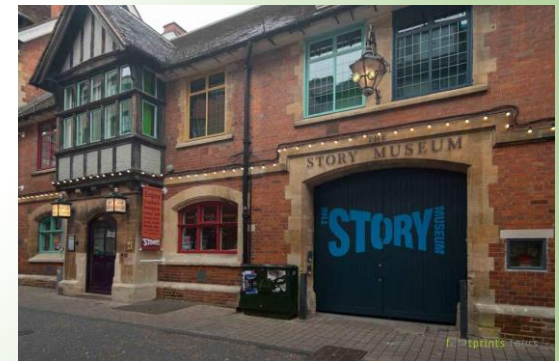
Reception-
Harcourt
Arboretum-
TBC



Pre-School
Post box-
Local visit



Planetarium-
PS & R



Reception-
The Story
Museum

Crowmarsh Gifford C of E Primary School & Pre-School

Care, Grow, Persevere, Shine



Our Learning

Grow, Persevere & Shine

Learning in EYFS is play based. We fully encourage children to follow their interests and to make their own resources, think outside the box and engage in active learning.

This does mean they may come home looking slightly less smart as they did when you dropped them off!



Getting messy is part of EYFS and a further reason we ask for a spare change of clothes. We do not mind if polo shirts are not completely white and jumpers are marked.



Crowmarsh Gifford C of E Primary School & Pre-School

Care, Grow, Persevere, Shine



Our Learning

Grow, Persevere & Shine



No fur, designer or 'smart' coats



Washable/wipeable coats



Puddle suits are a worthwhile investment!

Crowmarsh Gifford C of E Primary School & Pre-School

Care, Grow, Persevere, Shine



Home Learning-Reception

*Grow, Persevere
& Shine*

At the start of each half term, we will send home a home learning sheet with a range of activities.

These activities are intended to be done as a family and link to what we are learning in school.

As you complete the home learning, take pictures and/or videos and upload them to Tapestry so staff can see them and share achievements.

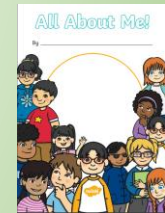


You will receive log ins for NUMBOTS and All Aboard Phonics to support Phonics and Maths learning.



A little activity before September:

We would like to get to know your child better.
Inside your pack is an 'All About Me' booklet to complete over the summer.



Crowmarsh Gifford C of E Primary School & Pre-School

Care, Grow, Persevere, Shine





Home Learning- Reading

Grow, Persevere & Shine

Pre-School will start Phase 1 phonics as part of their daily adult led tasks when the staff feel they have settled and are ready to start.

Phonics will start in Reception in the early weeks of September.
The needs of the cohort will determine how long we spend on Phase 1.

Once we feel the children are ready, we will move onto Phase 2 (learning phonemes and graphemes).

Children will bring home a reading record and reading book once we have learnt enough to begin reading words.

Please ensure these books are brought to school each day.

We only have one copy per child, and we will be reading them through the week as well as them needing to be read at home.



We will also be attaching a key ring of 'Tricky Words' to your child's reading record. Please practice these with your child regularly. They are words that cannot be segmented and need to be learnt by sight.

Crowmarsh Gifford C of E Primary School & Pre-School

Care, Grow, Persevere, Shine



The School Day

Grow, Persevere & Shine

Pre School

Morning Session 8:45- 11:45
Afternoon Session 12:15-3:15
Full day session: 8:45-3:15



Parents of children attending a half day session are welcome to sign their child up for the half hour lunch session (this is chargeable)

Pre-School gates will open at 8:45am until 8:55am and **12:15pm-12:25pm**. If you arrive outside of these times, you will need to enter via the school office

Reception

Drop off- 8:30-8:40am
Collection- 3pm

If you arrive for drop off after the gates are closed, entry will be via the office.

We do not have the staffing capacity to main the gates beyond these times. Being on time massively helps us to keep the children safe.



Crowmarsh Gifford C of E Primary School & Pre-School

Care, Grow, Persevere, Shine



Safeguarding

Grow, Persevere & Shine

We are extremely proud of our safeguarding procedures.

Parents from all year groups should make sure the office have an up to date list of who has permission to collect their child. Parents can amend safe collection lists on Arbor

We will not allow your child to leave the classroom if we have not had confirmation from a parent or guardian as to who they are being collected by (this includes family members that we have not met before)

We understand that there may be times where you will need someone to collect in an emergency, if this is the case, please send an **email** to either Miss Moore or the school office. If possible, please do not call. This is for safeguarding reasons.



Polite Request:

We politely request that you do not use mobile phones on the school site including the playground.



Crowmarsh Gifford C of E Primary School & Pre-School

Care, Grow, Persevere, Shine



Communication

Care, Grow & Shine

In EYFS we use Tapestry as one of the main forms of communication between Parents and Staff.

Tapestry is a secure, online learning portal.

We use Tapestry to share 'WOW' moments between school and home.



Each parent will be given an account linked to their child's Learning Journal.

Before your account can be created, you MUST complete the permission slip. Once your consent has been received, I am able to create your parent account. You will receive a link to create a password. Once you have done this, I will link your parent account to your child.

Tapestry is also used to share updates and messages.

Please ensure you are checking Tapestry regularly so not to miss any communications.

If you already have a child who attends CGPS EYFS, your account will remain unchanged.

Crowmarsh Gifford C of E Primary School & Pre-School

Care, Grow, Persevere, Shine



Communication

Care, Grow & Shine

School to Parent	Parent to School & Teacher	Arbor
<p>Emails from the office Website Rarely paper</p> <p>Its important we have the correct email address for you</p>	<p>To: office.3200@crowmarsh-gifford.oxon.sch.uk</p> <p>Pupil absence, trips, concerns, messages for teachers</p> <p>.</p>	<p>Please ensure your Arbor account is kept up to date with consents and safe collection lists.</p>



The school forwards PTA communication via email. Our Class Rep is Sophie Lipscomb

We do not expect staff to read or respond to communication during lesson times or outside of their work times. It is therefore important that communication is via the office as this email is regularly checked during school times.

The school does not use parent Whatsapp for communication and cannot view messages.

Crowmarsh Gifford C of E Primary School & Pre-School

Care, Grow, Persevere, Shine



Attendance

Care, Grow & Shine

Children being in school every day and on time is very important.

Evidence shows that if a child does not attend regularly:

- They cannot keep up with their class work.
- They do not achieve the results.
- They miss out on the social side of school and can have problems maintaining friendships.

From Reception to Year 6, Children learn Phonics/SPAG, Maths & English on a daily basis. Just like the other subjects these daily subjects form part of a sequence of learning and missing lessons can impede progress and understanding.

Of course, there are times when children are not well enough to attend school.

It can be tricky deciding whether or not to keep your child off school when they say they're unwell. There are Government Guidelines which can be found on our school website. Be assured we will always call you if we feel your child is not well enough to be in school.

If your child is unable to attend for any reason please call school: 01491 836785

This applies to all children including Pre School

We monitor attendance to safeguard children and will contact you if we have concerns.

Crowmarsh Gifford C of E Primary School & Pre-School

Care, Grow, Persevere, Shine



What to do now.

*Care, Grow, Persevere,
Shine*

Ensure all enrolment forms are completed accurately and returned. Your child cannot start in September without the correct documents completed.

Take your child's pack from the table at the side. It contains forms and documents to prepare for September.

Derek Bottomley (EYFS Link Gov) and Alice Fletcher-Single (PTA Co-Chair) are available to talk to now.

If you have any questions over the next few weeks, please feel free to email me
cmoore3200@crowmarsh-gifford.oxon.sch.uk

For Reception children, school will start at 8:30am on Wednesday 3rd September

first day of
SCHOOL

Crowmarsh Gifford C of E Primary School & Pre-School

Care, Grow, Persevere, Shine



A few little extras

Care, Grow, Persevere,
Shine



Scan me

50 things to do before you are 5
50thingstodo.org



Tiny Happy People- BBC

Crowmarsh Gifford C of E Primary School & Pre-School

Care, Grow, Persevere, Shine





Welcome to
your PTA



Donuts
£108.77



Santa Sleigh 1155
£480

Thames Run
£3,472



Break The Rules
Day £363.85

1155 Fireworks
£1,000



2nd Hand Uniform
Sales £157.01



Bake Sales
£176.34



Xmas Fete
£1,516.09

Asda Cashpot
£91.24



Xmas Refreshments
£350.71



School lottery
£80.20

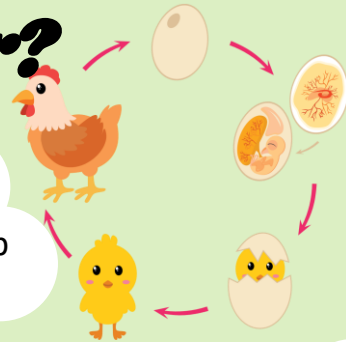
What has money raised gone towards so far?

£5,144.75 on School Toilets (plus £3k last year)



£285 on Living Eggs & £550 for the coop (€350 to follow)

far?



£100.75 on ukeleles



£270.10 on Timetable Rockstars



£550 on class trips



£1,050 on the pantomime - oh yes we did!



£50 on Christmas crackers



£253.21 for a new roof for KS1 courtyard

£605.27 for blinds and window tints for the hall



£99.92 on pre-school toys





If you have children at the school, you are all members of the
PTA!

Get involved with the fun events that your children will benefit from and come to the AGM on September 9th. 7pm in the hall.

This is a chance for you to meet the committee, share fundraising ideas and find out about the year ahead!



AGM
Tuesday 9th September
7pm



AGM

Tuesday 9th September

7pm

AGM

Tuesday 9th September

7pm

**Thank you for listening! See
you all on...**